



## **Rez4 Resizer**

Image Resizing Application  
Help File for CMS User



## ***Introduction***

Welcome to Rezolute4's image resizing solution. After numerous requests from our clients, especially CMS clients, we have taken up the task of developing an application to resize images in a bulk format, using width and height constraints.

The aim of the project was to deliver a application that's simple to operate and will execute the task as expected, giving small but useful features that one normally need to complete a simple task as resizing images.

## ***Table of Content***

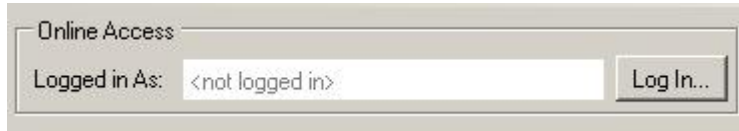
<a href="#">Introduction</a>	2
<a href="#">Table of Content</a>	2
<a href="#">How to Log Into your CMS Account</a>	3
Step 1: Choose Login	3
Step 2: Enter your Login Details	3
Step 4: Verify that you are Logged in	3
<a href="#">Quick Reference to Resizing Images</a>	4
Step 1: Add images to resize	4
Step 2: Select destination folder	5
Step 3: Select or Enter resize dimensions	5
Step 4: Select resize options	5
Step 5: Select Resize	6
<a href="#">The Image List</a>	7
Features	7
Menu Options	7
<a href="#">Destination Textbox</a>	9
Features	9
Notes	9
<a href="#">Resize Dimensions</a>	9
Features	9
<a href="#">Resize Options Box</a>	10
Features	10
Resize Options	11
No Resize	11
Fit – Width Only	12
Fit – Height Only	13
Fit – Width and Height	14
Fit – Width or Height	15

## How to Log Into your CMS Account

For this step you need to be connected to the internet. If are not connected connect now before you continue to follow the next steps.

### Step 1: Choose Login

1. Select the "Log In..." button.



### Step 2: Enter your Login Details

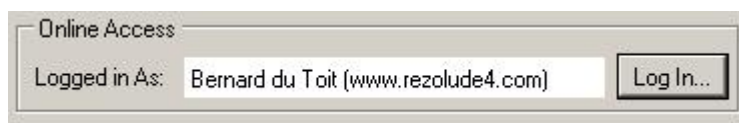
1. Enter your username and password in the provided boxes as you would use on the CMS.



2. Press "Login" and wait for the application to download your dimensions from the internet. It may take awhile depending on the speed of your internet connection.
3. If you have more than one website with us, you will need to select the website from the drop down list. If you only own one website with us it will automatically be chosen.

### Step 4: Verify that you are logged in

1. If you have successfully logged in, you will see your name and website in the white box next to the "Log In..." button.

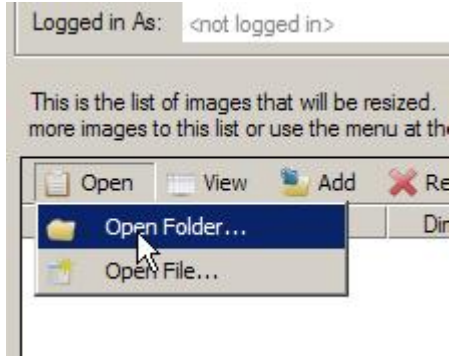


2. If you see this you have successfully logged in.

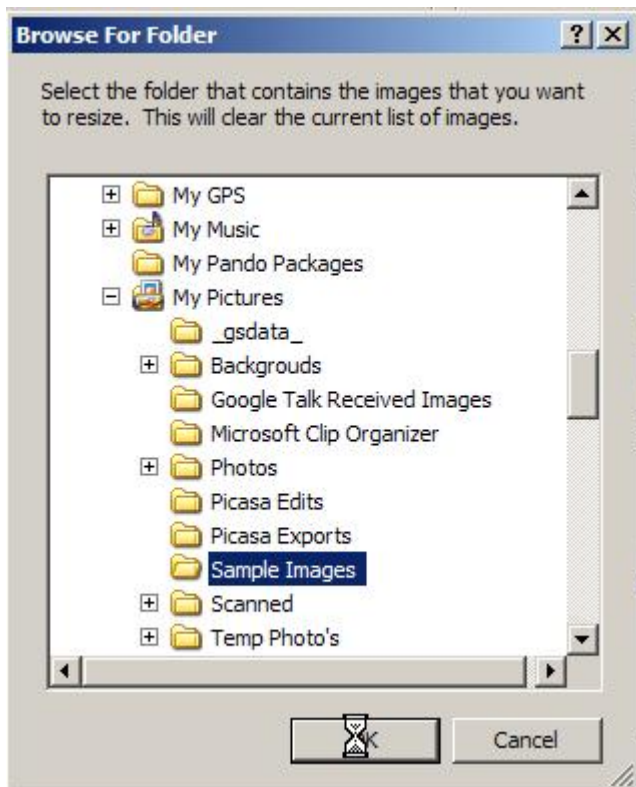
## Quick Reference to Resizing Images

### Step 1: Add images to resize

3. Select "Open" -> "Open Folder..." from the image list menu.

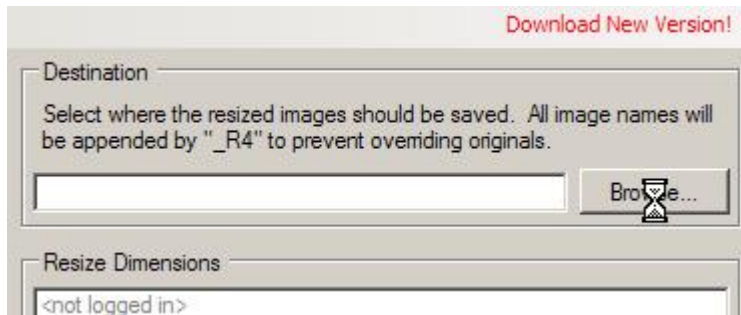


4. Browse to the folder where the images are located and select "OK".



## Step 2: Select destination folder

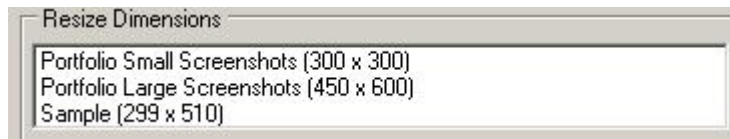
1. Select "Browse..." in the destination group box.



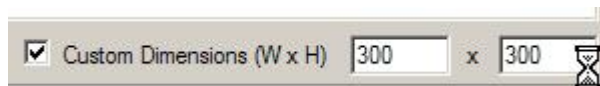
2. Browse to the folder where the images are located and select "OK".

## Step 3: Select or Enter resize dimensions

1. If you have logged into your CMS account you can pick the area that you want to resize these images for.



2. If you don't want to do a custom resize, you may check the "Custom Dimensions" checkbox and enter the width and height in the textboxes.



## Step 4: Select resize options

1. If you have logged into your CMS Account, and in Step 3 you have chosen one of the dimensions in the list, this option may be disabled, and you can skip this step.
2. If the controls are not disabled, you may choose the relevant resize option to use.



3. Depend on your selection you may opted in to crop the image to the dimensions after it was resized.



4. If you choose to crop the image you may choose how the cropped region is aligned.

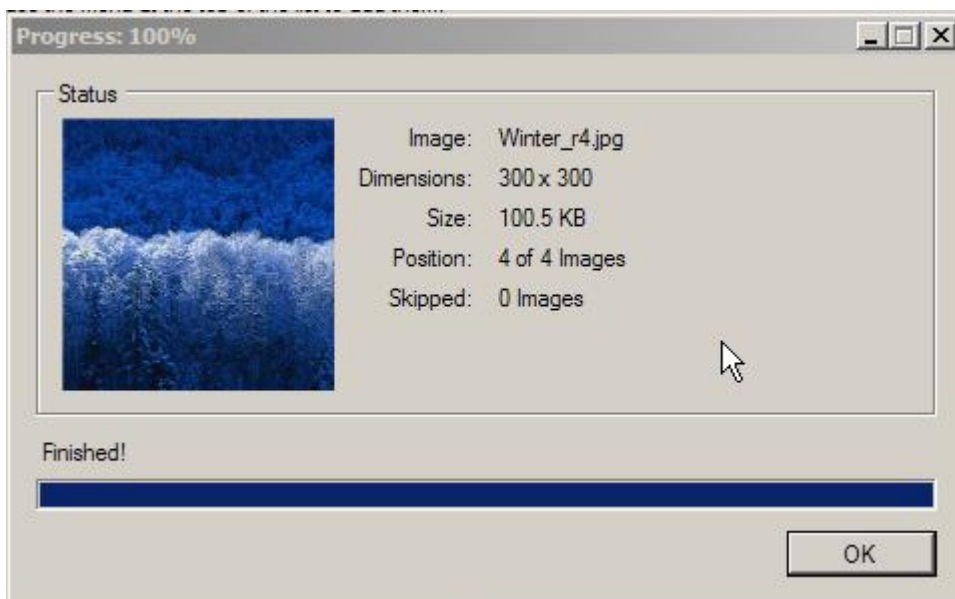


### Step 5: Select Resize

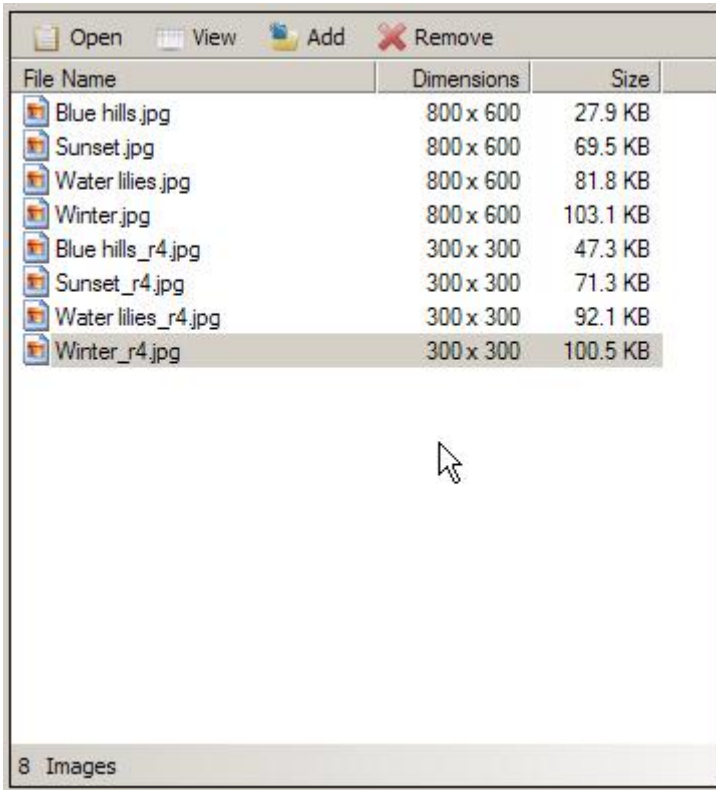
1. To start the resize processing select the "Resize..." button.



2. You will see a preview window that indicates the process.



## The Image List



### Features

- You can choose **different view modes**: Details, Thumbnails, List, and Tiles.
- The **image size** on disk is indicated in Details- and Tiles view mode.
- The image's **original dimensions** are shown in Details- and Tiles view mode.
- **Thumbnails** of the images are show in Thumbnail- and Tiles view mode.
- If an image is corrupted it shows the words: "Error" in the thumbnail.
- If you Double-Click on an image it **opens in the default viewer**.
- Indicates the **total amount of images** in the list.
- **Shows progress** while thumbnails are loaded.
- Support **Drag-and-Drop** of images into the list.
- Images can be **added or removed** from the list.
- If you select a file it is shown in the **resize preview box** and how it is affected by the resize options.

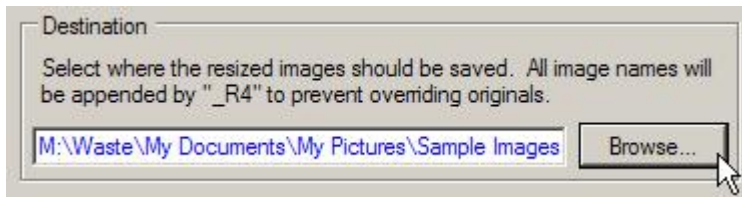
### Menu Options

- "Open"
  - "Open Folder..."
    - This will give you the opportunity to select a folder from which the images will be loaded into the Image List.
    - If the list already contains images, they will be removed.



- **"Open File..."**
  - This will give you the opportunity to select a single file or multiple files to load into the list.
  - If the list already contains images, they will be removed.
- **"View"**
  - **"List"**
    - This will show the list of images in a list view mode.
    - This view mode only shows the names of the images files.
  - **"Tiles"**
    - This will show the list of images in the tiles view mode.
    - This show a preview of each images, together with its filename, size and dimensions.
  - **"Thumbnails"**
    - This will show the list of images in the thumbnails view mode.
    - This view mode show's a preview of the image and its filename.
  - **"Details"**
    - This will show the list of images in the details view mode.
    - This shows the image filename, size and dimension.
- **"Add"**
  - **"Add Folder..."**
    - This will give you the opportunity to select a folder from which the images will be loaded into the Image List.
    - These images will be added to the current list of images.
    - You can only add an image once to the list.
  - **"Add File..."**
    - This will give you the opportunity to select a single file or multiple files to load into the list.
    - These images will be added to the current list of images.
    - You can only add an image once to the list.
- **"Remove"**
  - **"Selected Images"**
    - This will remove all selected images from the list.
  - **"All Images"**
    - This will clear the list.

## ***Destination Textbox***



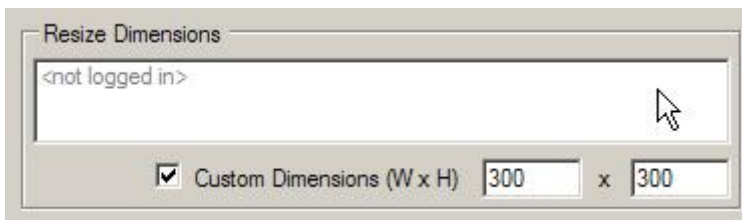
### Features

- The browse button always **remembers the last location** it was pointed at.
- You can **paste a path** in the textbox.
- If the path exists it will be **coloured blue**.
- If the path doesn't exist it will be **coloured red**.
- The original filenames are used for the resized images, but the letters "\_r4" is appended to them to prevent overriding originals.

### Notes

- The destination must exist and will not be created.

## ***Resize Dimensions***



### Features

- If you are logged into your Rezolute4 Content Management System (CMS) account you will see a list of dimensions that was set by Rezolute4. This is to assist our clients to remember the dimensions of some special images on their website.
- You do not need to have a Rezolute4 CMS account to use the resize application.

## ***Resize Options Box***



### Features

- Here you can choose in which way the resizer should use your dimensions to determine the resized images size.
- The image preview uses the selected image in the image list to generate the preview.
- The preview draws a box around the image to indicate how the dimensions fit on top of the resized image.
- If you click on the preview image a larger preview window will open.

## Resize Options

### No Resize

The image is not resized. Use this option if your image is already in the correct size and you only want to cut a certain shape from it.

*Example:* You have 2 images that are 200 x 150 and you want to cut a square image from them that is 100 x 100.

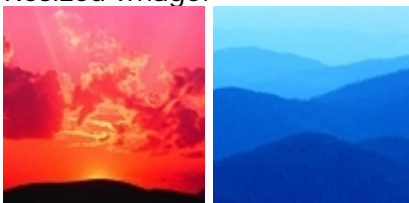
Source Images:



Preview Display:



Resized Image:



### Fit – Width Only

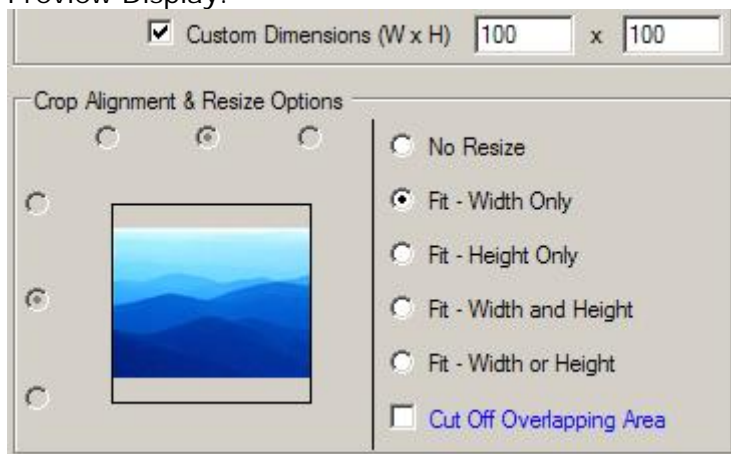
The images are resized so that the resized images' width is equal to the width specified.

*Example:* You have 2 images that are 200 x 150 and you want to resize them that their width is equal to 100 pixels.

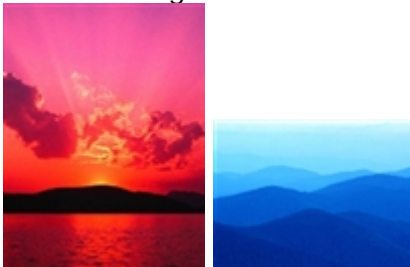
Source Images:



Preview Display:



Resized Image:



Fit – Height Only

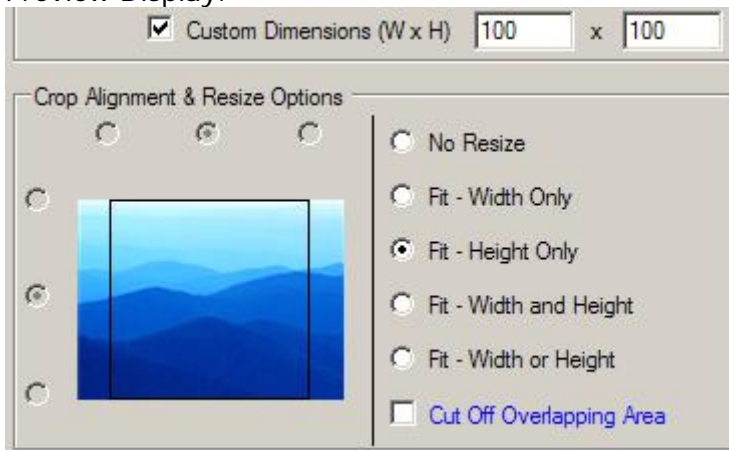
The images are resized so that the resized images' width is equal to the width specified.

*Example:* You have 2 images that are 200 x 150 and you want to resize them that their height is equal to 100 pixels.

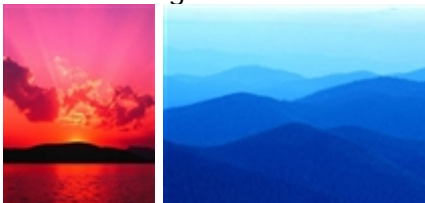
Source Images:



Preview Display:



Resized Image:



### Fit – Width and Height

The images are resized so that the resized images' width is equal to the width specified.

*Example:* You have 2 images that are 200 x 150 and you want to resize them that both their width and height fit inside a 100 x 100 pixels square.

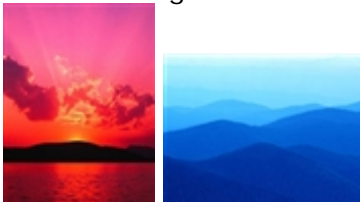
Source Images:



Preview Display:



Resized Image:



### Fit – Width or Height

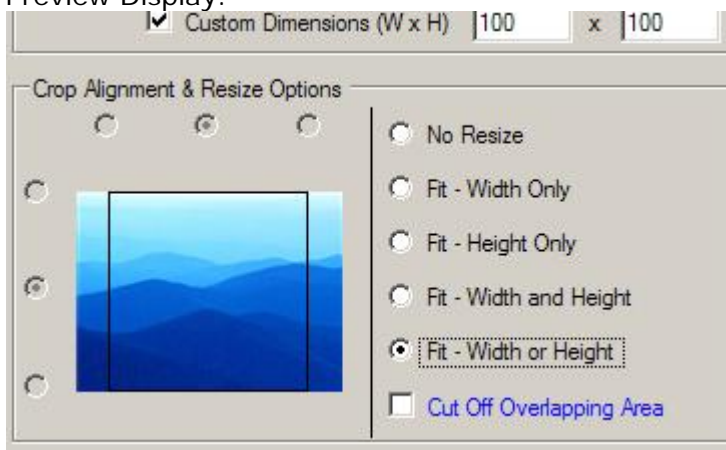
The images are resized so that the resized images' width is equal to the width specified.

*Example:* You have 2 images that are 200 x 150 and you want to resize them so that the smallest side, either width or height, fit into 100 x 100 pixels.

Source Images:



Preview Display:



Resized Image:

